

System Requirement

1) Hardware requirement:

*An IBM compatible PC is recommended

* Intel's CPU is recommended

* Main board on Intel chipset is recommended

* At least 128M of RAM (256M required for 16 cameras and above)

* At least 32M of RAM for display adapter. ATI Radeon 7000 DDR and above, Nvidia Geforce series are recommended (TNT2 Mode 64 supports only 4 or less screen mode)

2) Software requirement:

* Windows 2000 or Windows XP (**NTFS** file system is recommended, Windows 95, 98 do not support)

* Windows **Directx8.0 - 8.1** is recommended

* Latest Display adapter driver

Note: Before installing Display adapter driver, you must install Main board driver , otherwise DVR consumes a lot of CPU resource and does not work well

Installation

1) Installing Hardware

Take the steps as following:

1. Power off your PC and open the case.
2. Remove the screw and cover plate of an unused expansion PCI slot.
3. Press the Video Capture Card firmly into the slot.
4. If you have more than one Video Capture Card in your DVR product package, repeat the above steps until all the cards are plugged.
5. Please use the nuts provided to fasten the DVR cards from the rear end of your PC.
6. Close the case of your PC.
7. You are now ready to connect your video source to the video capture card(s), please ensure all connection secured.
8. The installation of hardware is completed.

2) Installing Driver(s) and DVR

(Notes: If there's another video capture device existing in your system, make sure to remove the driver before physically removing the device)

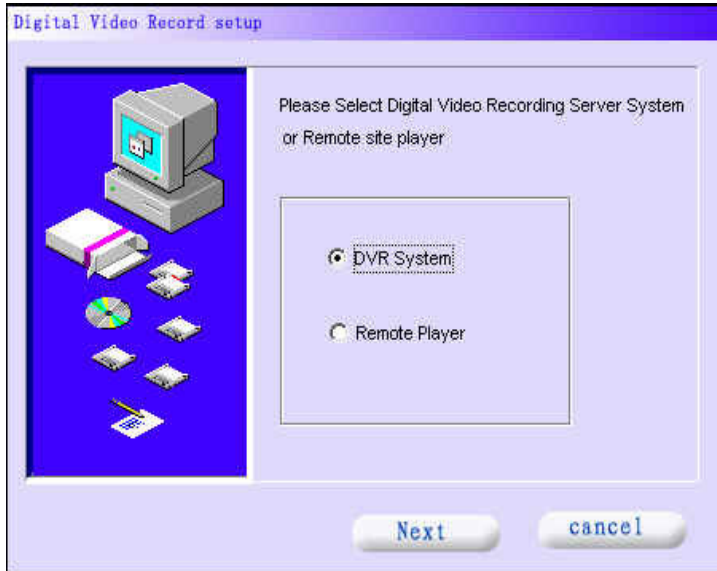
1) After plugging Video Capture Card into PCI slot, power on your PC and run Windows OS.

2) Shortly after entering Windows system a dialog box with a message of “found new multimedia device” is shown and then a window with “Video Capture Device” appears on your screen. Click ‘Cancel’ to complete manual installation mode. The setup program will install the driver automatically.

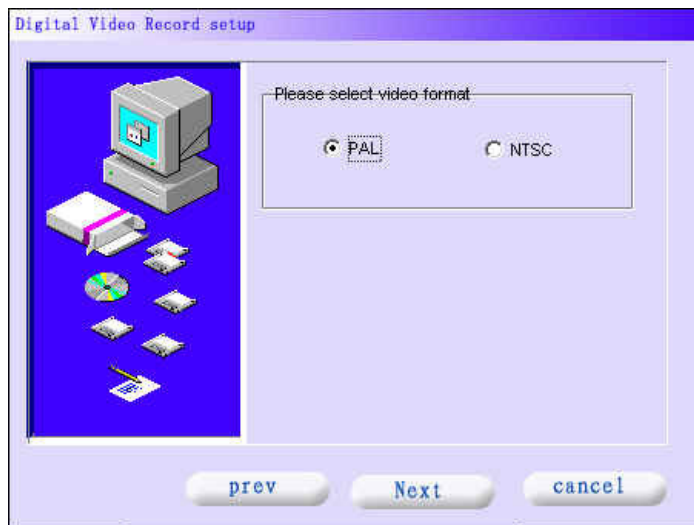
3) Insert the DVR setup CD into CD-ROM driver, the following window will be shown on your screen:



Then following Installation Windows will appear, follow the tips to install:

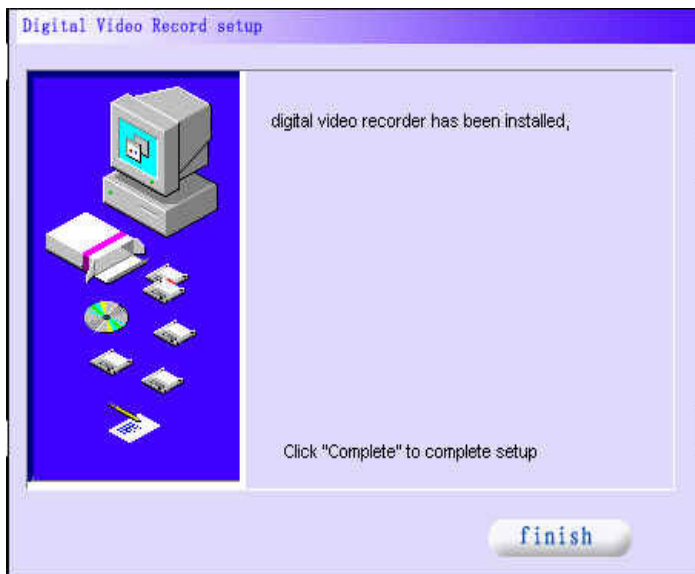
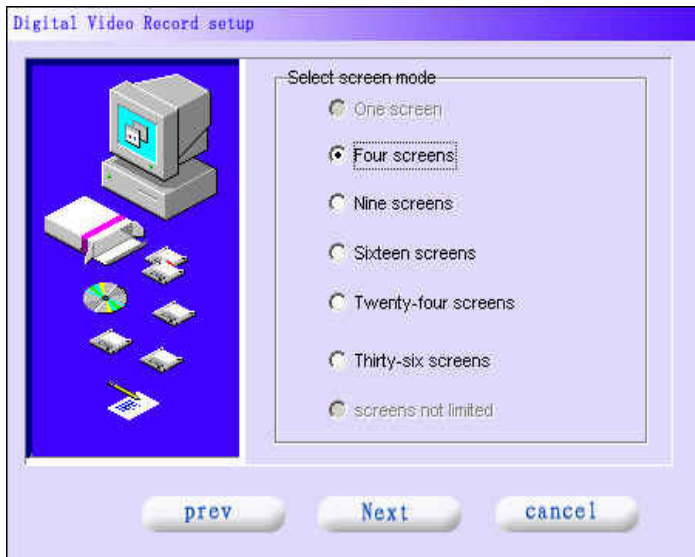


Select directories and click "next"



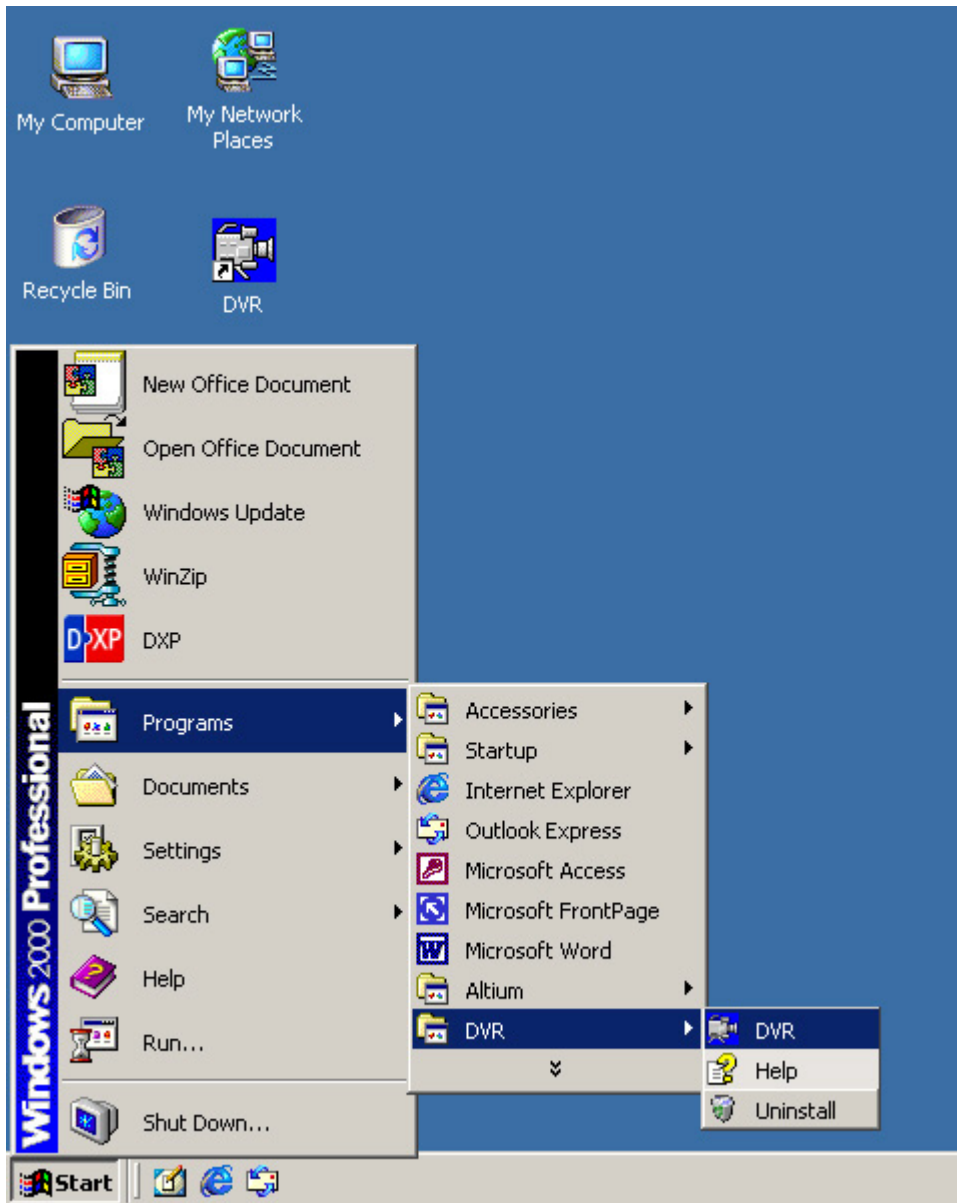
Test your display device to check if it can support the DVR system. As following:



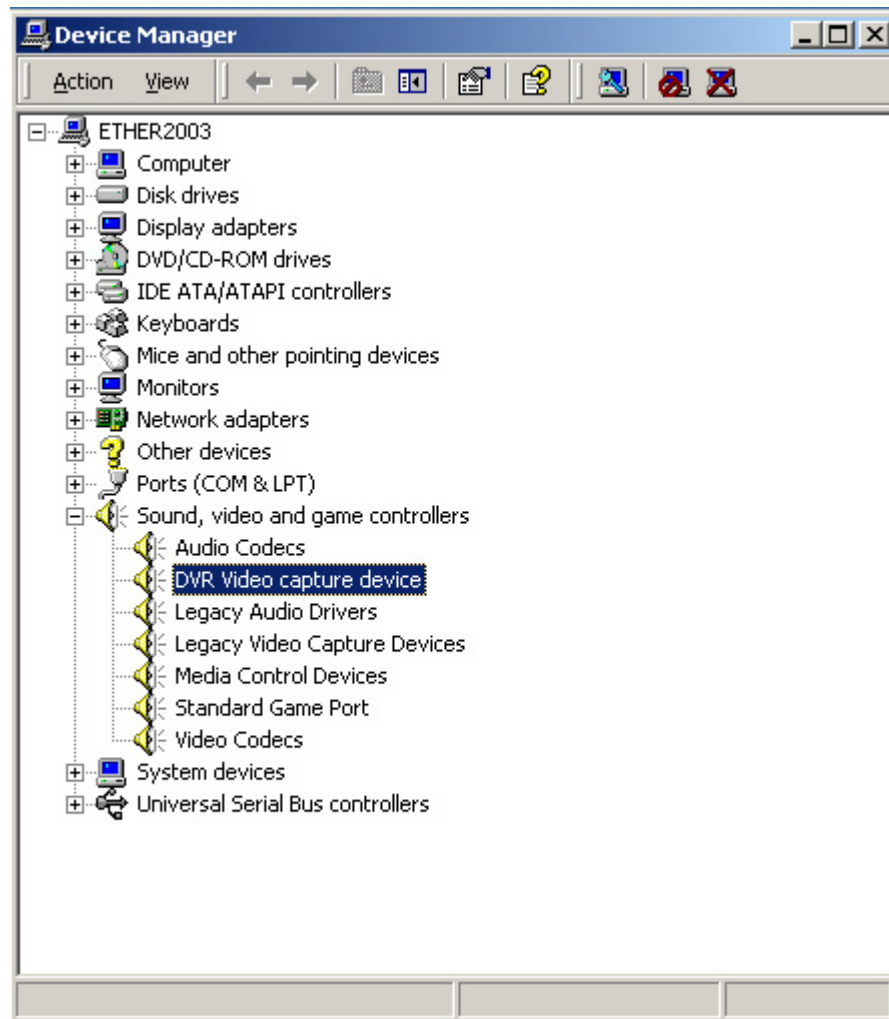


Finally, click "finish" to complete the installation. An icon will appear on your desktop automatically.

And an item will be added to the window **Start** menu:



After the DVR setup is completed, you can check if DVR driver(s) is installed successfully by going **Start---Settings---Control Panel---System---Hardware ---Device Manager...** to Device Manager window, there will be one or more items "DVR Video capture device" just as following:



If DVR card(s) and driver(s) are installed successfully, the amount of **DVR Video capture device** item should be equal to that of Xview chip(s) on DVR card.

3) Installing DVP

DVP is a remote or local player of dvr files, as well as a client software of remote control. It should not be installed in a PC with DVR installed.

The DVP remote player program can work both in Windows 98 and Windows 2000. Make sure to have a

PCI Ethernet card properly installed if you want to access the DVR system (server) in LAN or by Internet.

The installation is very easy, just follow the tips on each installation window and click **Next**. You can manage it without troubles. The installation windows are as following:

Digital Video Record setup



Welcome use CibDVR setup application, it will install CibDVR application in your computer. before it run, closing all other application is strongly recommended.

warning: this program is protected by copyright law and international treaties. Unauthorized reproduction and redistribution of this program, or any part of it, may result in severe civil and criminal penalties and will be prosecuted to the maximum extent.

Next

cancel

Digital Video Record setup



Following directory will be created

Directory for executing files

C:\DVR

Directory for media files

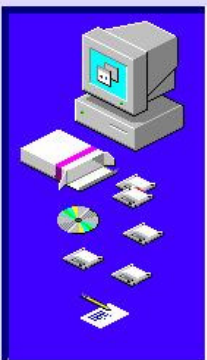
E:\dvr_Media

prev

Next

cancel

Digital Video Record setup



digital video recorder has been installed

Click "Complete" to complete setup

finish

Go to **start > programs-> DVR**, choose **Uninstall**, the uninstall program will remove the DVR system.

